

3M Science.
Applied to Life.™

Featuring functionalized tri-calcium
phosphate – exclusively
from 3M



Advanced treatments – designed for every day.

3M™ Clinpro™ 5000
1.1% Sodium Fluoride Anti-Cavity Toothpaste

3M™ Clinpro™ Tooth Crème
0.21% Sodium Fluoride Anti-Cavity Toothpaste

Innovative formulations. Strong, healthy smiles.

When it comes to fluoride toothpastes, what's the formula for success? Don't change your patients' routine – strengthen it. An advanced formula from 3M offers extra protection that's as simple as brushing, making it easier for your patients to fight cavities.

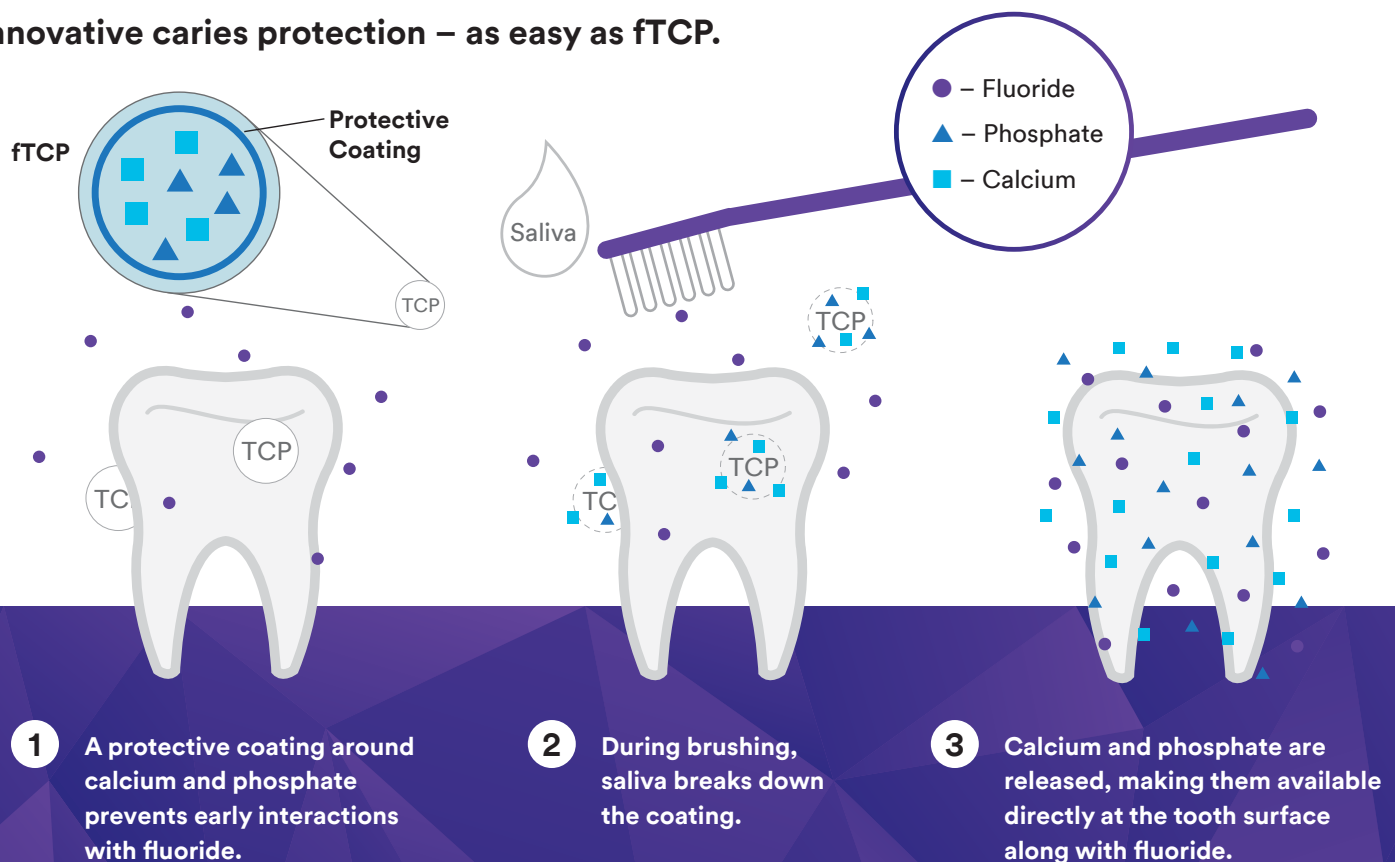
The secret ingredients

For over half a century, the ADA has recommended the use of fluoride toothpastes to help prevent tooth decay.¹ However, not all fluoride toothpastes are created equal. That's because with traditional formulations, calcium and fluoride can combine prematurely in storage and render them less effective.

Enter functionalized Tri-Calcium Phosphate (fTCP), available exclusively from 3M.

Our proprietary “smart” ingredient changes the game. It contains calcium and phosphate – the building blocks of healthy teeth, naturally found in saliva – and isolates them from fluoride until brushed on the teeth. Changing the way these critical minerals are delivered enhances their performance for superior remineralization and greater fluoride uptake.

Innovative caries protection – as easy as fTCP.



Clinically-proven science. Clinically-effective toothpaste.

3M™ Clinpro™ Toothpastes

Every patient's fluoride treatment needs are unique – that's why we offer two clinically-proven toothpaste formulations to meet ADA recommendations and give them their healthiest smile.

- Prescription-strength 3M™ Clinpro™ 5000 Anti-Cavity Toothpaste
- Non-prescription, low-fluoride 3M™ Clinpro™ Tooth Crème Anti-Cavity Toothpaste



Clinically Proven
Performance

Both formulations are backed by **over 10 years of clinical performance** and contain proprietary fTCP – so no matter their fluoride needs, they'll still benefit from its enhanced remineralizing effects.

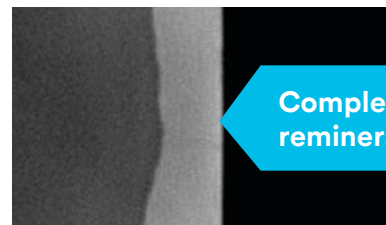
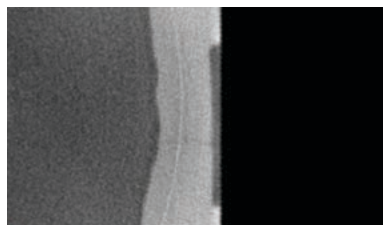


Key advantages of 3M Clinpro toothpastes:

- Strengthen teeth, repair/reverse white spot lesions
- Promote superior remineralization throughout the lesion
- Optimized pH levels aid remineralization
- Create acid-resistant mineral in dentin tubules
- Contain sodium fluoride and innovative functionalized tri-calcium phosphate (fTCP)
- Low-abrasive formulas for gentle, effective cleaning of exposed root surfaces
- Deliver more fluoride to the tooth surface

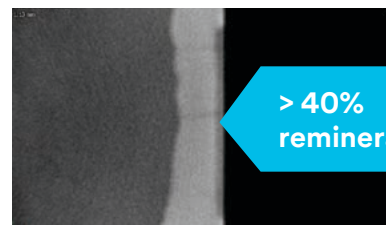
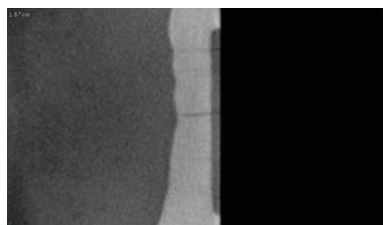
Remineralization of white spot lesions – 20 day pH cycling²

Clinpro
5000



Complete
remineralization

Clinpro
Tooth Crème



> 40%
remineralization

Baseline

20 d pH Cycling

Choose the right formulation for every case.

3M™ Clinpro™ 5000

1.1% Sodium Fluoride Anti-Cavity Toothpaste

Prescription-strength

Specifically formulated for moderate to high-risk patients who may need more fluoride than over-the-counter options, Clinpro 5000 provides additional protection without changing patients' daily routine. The high fluoride content and our proprietary fTCP ingredient deliver superior remineralization for your caries-prone patients.

- Contains 1.1% Sodium Fluoride (5000 ppm)
- Delivers more fluoride than over-the-counter toothpastes to strengthen and repair enamel
- Available in three great flavors: Vanilla Mint, Spearmint and Bubblegum
- Available by prescription only

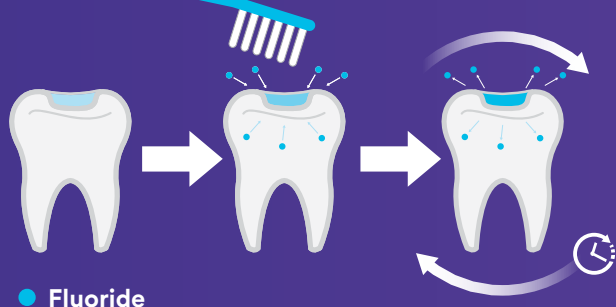
3M™ Clinpro™ Tooth Crème

0.21% Sodium Fluoride Anti-Cavity Toothpaste

Over-the-counter

Clinpro Tooth Crème is ideal for patients who may not need a prescription-strength formula but still benefit from preventive care, as well as those who may prefer a lower fluoride option. This non-prescription-strength toothpaste allows patients to get all the benefits of our innovative fTCP ingredient at a lower fluoride concentration:

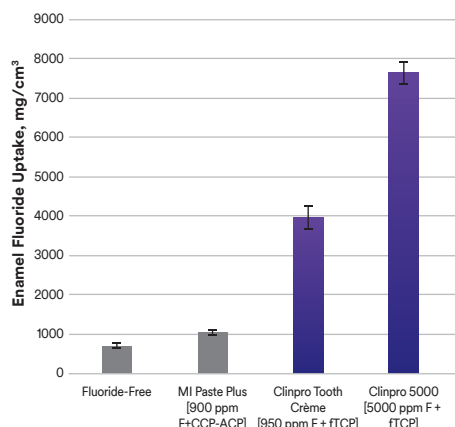
- Contains 0.21% Sodium Fluoride (950 ppm)
- Safe to be used twice daily in place of regular over-the-counter toothpaste, or as recommended by a dentist
- Pleasant Vanilla Mint flavor
- Available over the counter



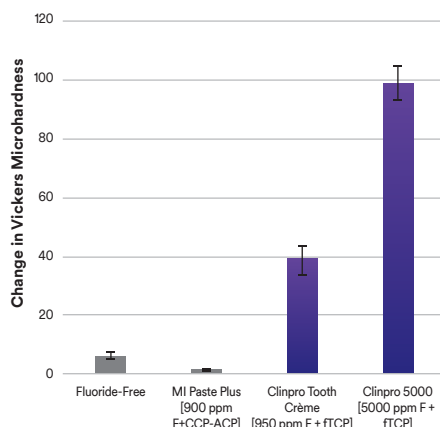
Recharge ahead!

Both Clinpro 5000 and Clinpro Tooth Crème have the ability to “recharge” fluoride-releasing sealants and restorations. This means that every time a patient brushes their teeth, their restoration or sealant absorbs more fluoride, which is then re-released into the mouth. This recharge can last up to several hours – and it repeats every time your patient brushes their teeth.

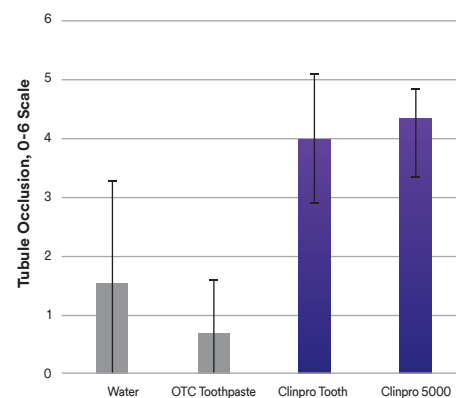
Enamel Fluoride Uptake – 20-day pH cycling²



Remineralization – 20-day pH cycling²



Tubule Occlusion³



High-risk patients need high-quality care.

Tooth decay is the world's most widespread noncommunicable disease, affecting 60–90% of children and nearly 100% of adults globally.⁴ And while modern oral hygiene habits and advancements in dental technology have made an impact, many patients still need preventive treatments. The American Dental Association (ADA) recommends that all patients should brush with fluoride toothpaste twice a day to maintain oral health, but those at a moderate to high risk of caries can benefit from higher concentrations of fluoride.^{5, 6}

ADA-approved caries risk assessment (ages >6)⁶

Moderate Risk	<ul style="list-style-type: none">• 1 or 2 carious lesions or restorations in the last three years• Unusual tooth morphology• Dental/Orthodontic appliances	Additional risks include: <ul style="list-style-type: none">• Presence of multiple factors that may increase caries risk• Suboptimal fluoride exposure• Xerostomia due to medication or other factors• Special health care needs that may limit/prevent adequate oral health care
High Risk	<ul style="list-style-type: none">• 3 or more carious lesions or restorations in the last three years• Missing teeth due to caries in the past three years• Cariogenic diet	

Fluoride: a smile's best friend.

Fluoride, the ionic form of the element fluorine, is the 13th most abundant element in the earth's crust and one of your patients' best defenses against dental caries.

This naturally-occurring mineral holds onto calcium and phosphate in the mouth, thereby increasing the mineralization of enamel – and provides an extra boost of protection by replacing the normal enamel crystalline composition hydroxyapatite with more decay-resistant fluorapatite, inhibiting decay.



Clinpro™ 5000

1.1% Sodium Fluoride Anti-Cavity Toothpaste

HIGHLIGHTS OF PRESCRIBING INFORMATION

INDICATIONS AND USAGE

Clinpro 5000 Anti-Cavity Toothpaste is indicated for use as part of a professional program for the prevention and control of dental caries.

DO dosage AND ADMINISTRATION

- Use once daily in place of conventional toothpaste unless instructed otherwise by a physician or dentist.
- Apply a thin ribbon or pea-sized amount of Clinpro 5000 Anti-Cavity Toothpaste using a soft-bristled toothbrush and brush teeth for at least two minutes.
- After brushing, adults should expectorate. Children 6 to 16 years of age should expectorate and rinse mouth thoroughly with water.

DO dosage FORMS AND STRENGTHS

White toothpaste containing 1.1% sodium fluoride

CONTRAINDICATIONS

Do not use in children under 6 years of age unless recommended by a dentist or physician.

WARNINGS AND PRECAUTIONS

- Do not swallow.
- Keep out of reach of children under 6 years of age.
- Repeated ingestion of high levels of fluoride may cause dental fluorosis.

ADVERSE REACTIONS

Allergic reactions and other idiosyncrasies have been rarely reported.

To report SUSPECTED ADVERSE REACTIONS, contact 3M ESPE Dental Products Division at 1-800-634-2249 or www.3MESPE.com, or FDA at 1-800-FDA-1088 or www.fda.gov/medwatch.

USE IN SPECIFIC POPULATIONS

Pregnancy

Prescribing physicians and dentists should consider total fluoride exposure (dental care plus food, water and other sources) when prescribing the product for use in pregnant women or women who may become pregnant.

Nursing Mothers

Prescribing physicians and dentists should consider total fluoride exposure (dental care plus food, water and other sources) when prescribing the product for use in women who are nursing.

Pediatric Use

The primary adverse effects of fluoride are fluorosis of dental enamel and of the skeleton; these effects occur at exposures below those associated with other adverse health effects. The population most at risk for dental fluorosis is children during the period of tooth formation, i.e. from birth to 8 years of age. For this population, the Institute of Medicine (IOM) established Fluoride Upper Limits of intake based on the risk of dental fluorosis. In populations with permanent dentition, skeletal fluorosis is the greatest risk from excessive fluoride. For this population the Institute of Medicine established Fluoride Upper Limits based on the risk of skeletal fluorosis.¹

Population

Infants 0-6 months old
Infants 7-12 months old
Children 1-3 years old
Children 4-8 years old
Children > 8 years old

IOM Fluoride Upper Limit

0.7mg/day
0.9mg/day
1.3mg/day
2.2mg/day
10mg/day

Prescribing physicians and dentists should consider total fluoride exposure (dental care plus food, water and other sources) when prescribing the product for use in children.

Geriatric Use

No studies of Clinpro 5000 Anti-Cavity Toothpaste have been conducted to determine whether subjects aged 65 and over respond differently from younger subjects.

OVERDOSAGE

Ingestion of large amounts of fluoride may result in abdominal pain, stomach upset, nausea, vomiting and diarrhea. These symptoms may occur at overdoses of 5 mg/kg of body weight. Fluoride doses of 16 mg/kg have been fatal.

Treatment for Overdose of Clinpro 5000 Toothpaste

Ingested fluoride dose	Amount for 10kg (22 pound) child*	Recommended action to take
Less than 5mg/kg	This equals less than ½ ounce (or less than 3 teaspoons).	Do not induce vomiting. Give 1-2 glasses of milk and observe for symptoms of stomach upset. If symptoms persist more than a few hours, seek medical attention or contact a poison control center.
5mg/kg or more	This equals about ½ ounce (about 1 tablespoon) or more.	Do not induce vomiting. Give 1-2 glasses of milk and seek medical attention or contact a poison control center.
15mg/kg	This equals 1 ounce or ¼ of the tube.	Seek immediate medical attention. Do not induce vomiting. Give 1-2 glasses of milk.

*The amount to reach the fluoride dose will be proportionately larger with older children and adults. A thin ribbon or pea-sized amount of Clinpro 5000 Anti-Cavity Toothpaste weighs approximately 0.3 g and contains approximately 1.5 mg of fluoride ion. A 4 oz. tube contains 564 mg of fluoride ion.

1. IOM. Dietary Reference Intakes: The essential guide to nutrient requirements. National Academies Press 2006.

Storage

This product is designed to be stored and used at room temperature. Do not freeze or expose to extreme heat. See outer package for expiration date.

Manufactured for:



3M ESPE
Dental Products
St. Paul, MN 55144-1000 USA
Revision date: 01/11/2012

Rx Only

3M, ESPE and Clinpro are trademarks of 3M or 3M Deutschland GmbH.
© 3M 2013. All rights reserved.

This is a summary of the prescribing information. For complete prescribing information, please visit www.3M.com.

Ordering Information

	Item #	Product Information
	12117	Clinpro™ Tooth Crème 0.21% Sodium Fluoride Anti-Cavity Toothpaste—Vanilla Mint Flavor – 4oz tube
	12115	Clinpro™ 5000 1.1% Sodium Fluoride Anti-Cavity Toothpaste—Vanilla Mint Flavor – 4oz tube
	12115BG	Clinpro™ 5000 1.1% Sodium Fluoride Anti-Cavity Toothpaste—Bubble Gum Flavor – 4oz tube
	12115SM	Clinpro™ 5000 1.1% Sodium Fluoride Anti-Cavity Toothpaste—Spearmint Flavor – 4oz tube

¹ American Dental Association. "ADA Uses Fluoride Toothpaste to Fight High Cavity Rate in Children." Electronic Health Records, 10 Feb. 2014, www.ada.org/en/press-room/news-releases/2014-archive/february/ada-uses-fluoride-toothpaste.

² 3M internal data.

³ Mackey AC, Karlinsky RL, Gidley J, Stookey GK, Pfarrer A. J Dent Res 88 (Spec Iss A): #1935, 2009.

⁴ World Health Organization (WHO) Media Center. Fact sheet #318, April 2012.

⁵ Center for Scientific Information, ADA Science Institute. "Caries Risk Assessment and Management." Electronic Health Records, American Dental Association, 14 Dec. 2018, www.ada.org/en/member-center/oral-health-topics/caries-risk-assessment-and-management.

⁶ Weyant, Robert J. "Topical Fluoride for Caries Prevention." The Journal of the American Dental Association, vol. 144, no. 11, 2013, pp. 1279–1291.

www.3M.com/PreventiveCare



3M Oral Care
2510 Conway Avenue
St. Paul, MN 55144-1000 USA

Phone 1-800-634-2249

Web 3M.com/dental

3M Canada
Post Office Box 5757
London, Ontario N6A 4T1
Canada

Phone 1-888-363-3685

3M, ESPE and Clinpro are trademarks of 3M or 3M Deutschland GmbH. Used under license in Canada. Printed in USA.
© 3M 2019. All rights reserved.
70-2013-7138-5