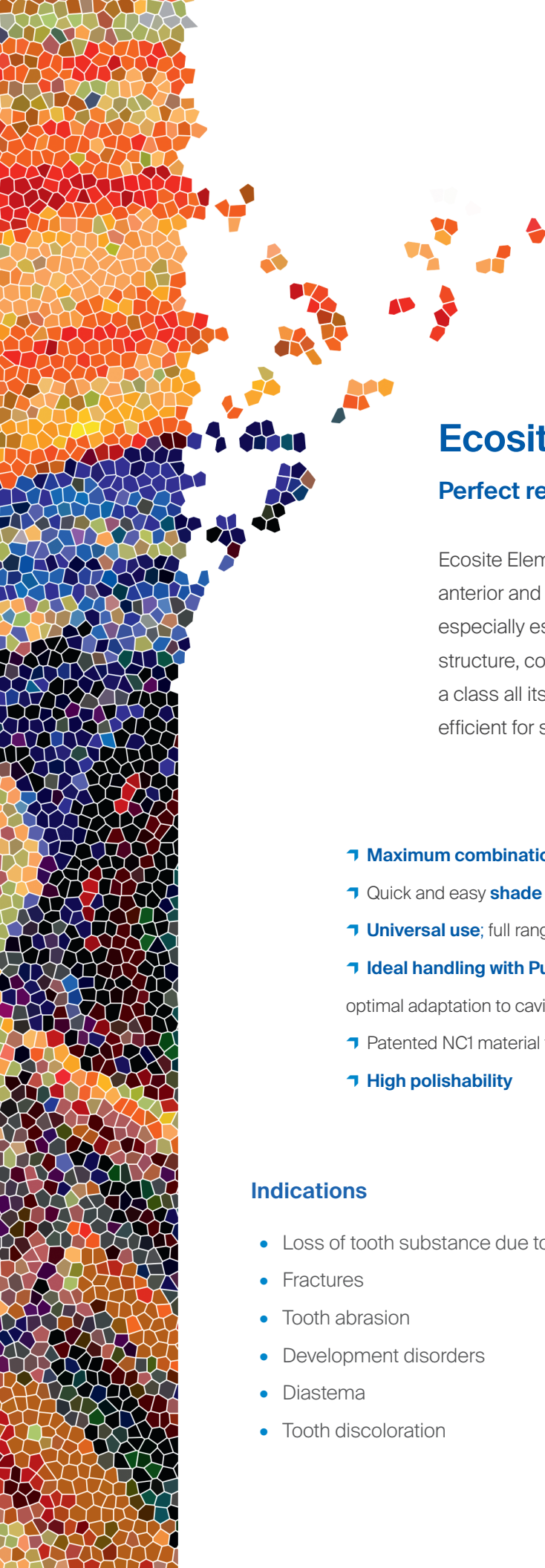


The modern art of
composite

Ecosite Elements

 **New!**





Ecosite Elements

Perfect results and amazing simplicity, every time

Ecosite Elements is a light-curing nanohybrid composite system for the anterior and posterior region that can be used for most typical treatments; especially esthetically demanding cases. The innovative NC1 material structure, compact, intelligent shade selection and exceptional handling are in a class all its own. Plus, it's intuitive, esthetic, precisely engineered and reliably efficient for superb results; *every day, every treatment.*

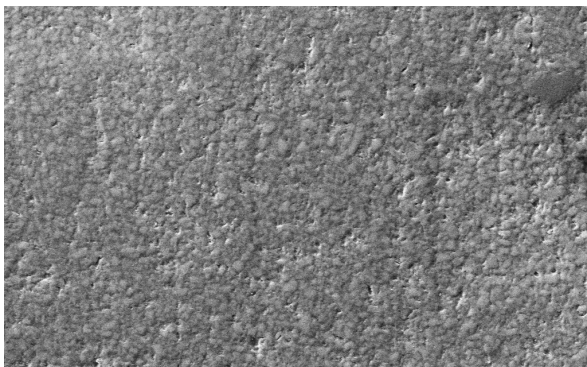
- **Maximum combination** of shades using a compact, modular shade system
- Quick and easy **shade matching selection** with VITA shades and logical complements
- **Universal use**; full range of anterior and posterior indications
- **Ideal handling with Push & Flow effect**: Initially firm, becomes softer during sculpting for optimal adaptation to cavity walls; eliminates bubbles and cracks
- Patented NC1 material technology for **homogeneous distribution of particles**
- **High polishability**

Indications

- Loss of tooth substance due to caries
- Fractures
- Tooth abrasion
- Development disorders
- Diastema
- Tooth discoloration
- Slight misalignment of the anterior teeth
- Primary and secondary prevention of caries
- Dental or periodontal diseases (i.e. trauma or periodontitis that require the splinting of the affected teeth)

Exceptional handling thanks to NC1 technology.

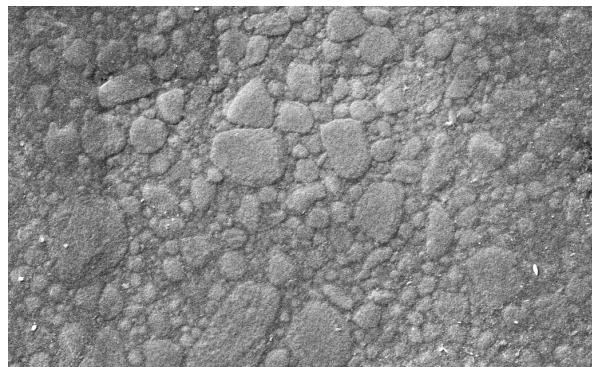
Both Ecosite Elements and Ecosite Bulk Fill feature DMG-patented NC1 technology (non-clustering). The result? Its fully state-of-the-art mechanical values are perfectly suited for the anterior and posterior regions.



Ecosite Elements
2000x magnification

Source: Internal images, DMG, 2018

Thanks to the precise silanization of the individual filler particles, NC1 technology enables a homogeneous distribution and ensures an optimal working quality, maximum polishability and stunning results.



Filtek Supreme XTE (3M ESPE)
2000x magnification

Push-and-Flow effect for reliable adaptation.

The Push-and-Flow effect ensures that the material adapts to the respective requirements depending on the situation. **Firm at the outset, it quickly becomes noticeably softer during sculpting**, which enables optimal adaptation to

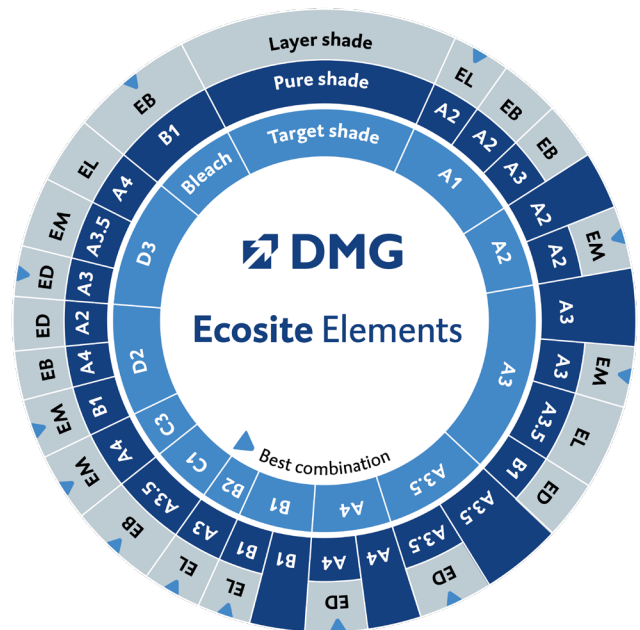
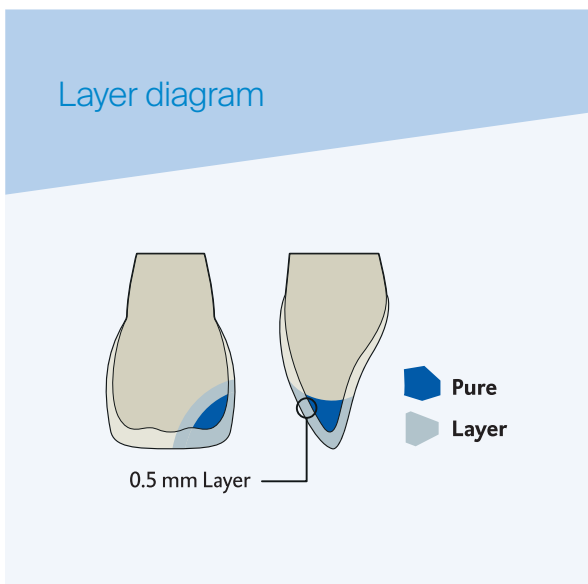
the cavity walls and the precise reproduction of anatomical features. It also helps avoid bubbles and cracks in the critical contact surfaces between the individual composite layers.

Maximum variety of combinations.

Every shade. Every technique.

The combination options offered by Ecosite Elements intelligent shade system and its ultra high-quality composition allows for treatment across all indications. Whether a simple posterior filling using the Pure shades, or an anterior restoration

that requires a high level of detail, monochromatic or multi-shade technique—Ecosite Elements always provides an impressive, quick, high-gloss polish and an amazing chameleon effect.



Pure & Layer Modules

Pure shades are used to help achieve a natural-looking dentin or enamel replacement, and Layer shades are used as an enamel replacement or for the layer technique in combination with Pure shades.

The compact selection of highly viscous, radiopaque composites include five VITA shades (A1, A2, A3, A3.5, B1), 1 bleach shade (BL1) and four enamel shades (EB, EL, EM, ED) in different opacities.

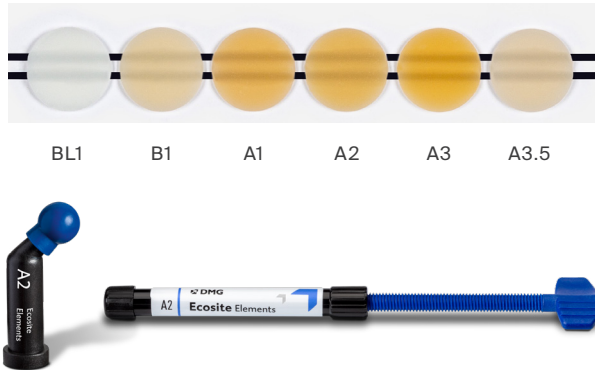
Highlight Module

The OA2 and INC shades are radiopaque composites with optimum flow composites that are suitable for fissure sealing. OA2 is also used for veneering of slightly discolored areas and for creating ultimate tooth opacity, whereas INC has a high transparency, making it ideal for esthetic incisal edge design.

The White (W) and Brown (B) shades are flowable composites for the customizing restorations: W is used for the reproduction of white spots and as an opaque covering layer, and B is used for sealing fissures and the replication of brown spots.

The intelligent shade system with proven precision.

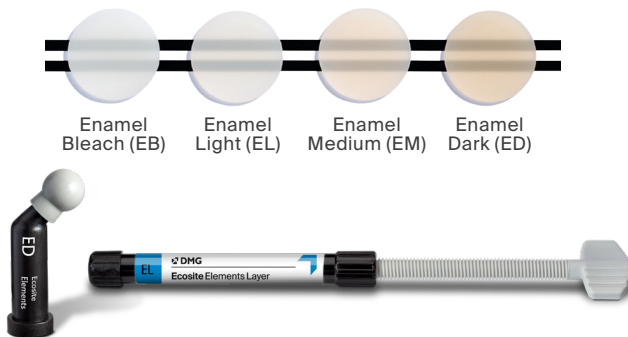
Pure Module



90% of all typical restorations

- 5 VITA shades + Bleach Shade in one opacity
- Highly viscous
- Highly radiopaque
- Monochromatic: dentin / enamel replacement
- Layering technique: enamel replacement
- Chameleon effect

Layer Module

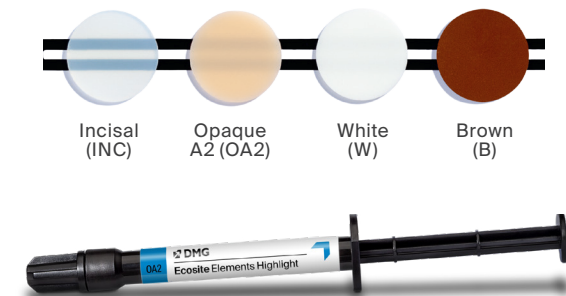


Pure + Layer:

96% of all typical restorations

- 4 enamel shades in 2 opacities
- Highly viscous
- Highly radiopaque
- Enamel replacement (monochromatic or layering technique)

Highlight Module



Pure + Layer + Highlight:

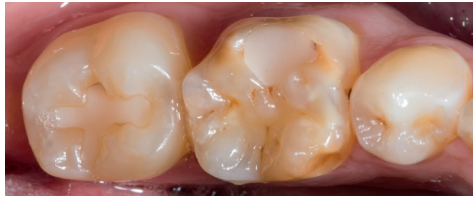
98% of all typical restorations

- 4 colors in 4 opacities
- Flowable consistency
- Masking of discolored areas
- Reproduction of white and brown spots and the replication of brown spots
- Esthetic incisal edge design
- Fissure sealing

Ecosite Elements: Simply expert results.

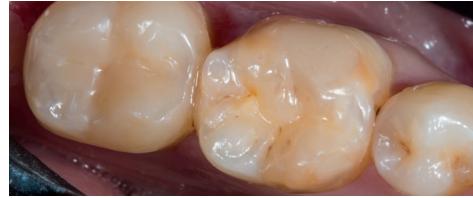
Ecosite Elements impresses
with perfect results in all areas of
application. Fast, flexible, efficient.

Before



Dr. Ali Salehi, Frankrike, teeth 46 + 47.

After



Result with Pure A3.



Dr. Abdi Sameni, teeth 24 + 25



Result.



Erik-Jan Muts, Nederlanderna, teeth 36 + 37.



Result with Pure A3.5 + Layer Enamel Medium + Highlight Brown.



Max-Richard Seidemann, Tyskland, teeth 11 + 21.



Result with Pure A3 + Layer Enamel Medium.

Product & Contents

1 Syringe @ 4g ea:

Shade BL1 - 222840, Shade B1 - 222807, Shade A1 - 222841, Shade A2 - 222808, Shade A3 - 222809, Shade A3.5 - 222810, Shade EB (Enamel Bleach) - 222812, Shade EL (Enamel Light) - 222813, Shade EM (Enamel Medium) - 222814, Shade ED (Enamel Dark) - 222815

16 Safetips @ 0.25g ea:

Shade BL1 - 222850, Shade B1 - 222820, Shade A1 - 222851, Shade A2 - 222821, Shade A3 - 222822, Shade A3.5 - 222823, Shade EB (Enamel Bleach) - 222825, Shade EL (Enamel Light) - 222826, Shade EM (Enamel Medium) - 222827, Shade ED (Enamel Dark) - 222828

1 Syringe @ 2g ea:

Shade INC (Incisal) - 222816, Shade OA2 (Opaque A2) - 222817, Shade W (White) - 222818, Shade B (Brown) - 222819



DMG America, LLC: 65 Challenger Road, Suite 340, Ridgefield Park, NJ 07660
tel: 800.662.6383 | email: info@dmg-america.com | web: www.dmg-america.com

