



Filtek™

One
Bulk Fill Restorative



You choose it
for speed.
Now it's more
esthetic, too.



You'll like that it's simple.
They'll be happy that it
looks good, too.

3M™ Filtek™ One Bulk Fill Restorative



It's true. Now bulk fill placement can be more esthetic.

Posterior restorations are challenging—which is why bulk fill composites that simplify and speed up the procedure have become so popular.

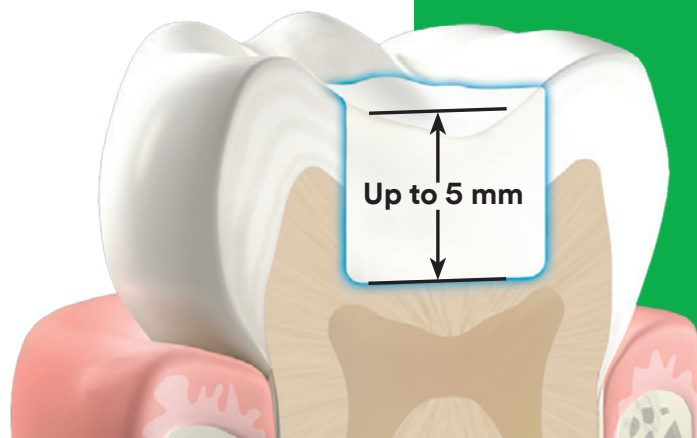
However, until now, the faster, easier placement of bulk fill has been at the sacrifice of esthetics. So, as a global leader in esthetic and restorative technologies, we went back to our experts for a solution you're sure to love:

3M™ Filtek™ One Bulk Fill Restorative.

Designed for the posterior, its unique optical properties and improved opacity give you the simplicity of one-step placement—up to 5 mm—*without compromising esthetic results.*

Now you and your patients have something to smile about.

- Fast and easy one-step placement
- Increased opacity for improved esthetics
- Stress relief to enable up to 5mm depth of cure
- Excellent adaptation
- No need for layering or expensive dispensing devices
- Excellent handling and sculptability
- 3M's true nanotechnology provides superior wear resistance and excellent polish retention
- High radiopacity
- Unique tip design for easier access to deep cavities
- Available in 5 shades



How 3M Science enables the simplicity of one-step bulk placement with improved esthetics.

The technologies behind 3M™ Filtek™ One Bulk Fill Restorative

NEW! Smart Contrast Ratio Management

Increases opacity without sacrificing depth of cure

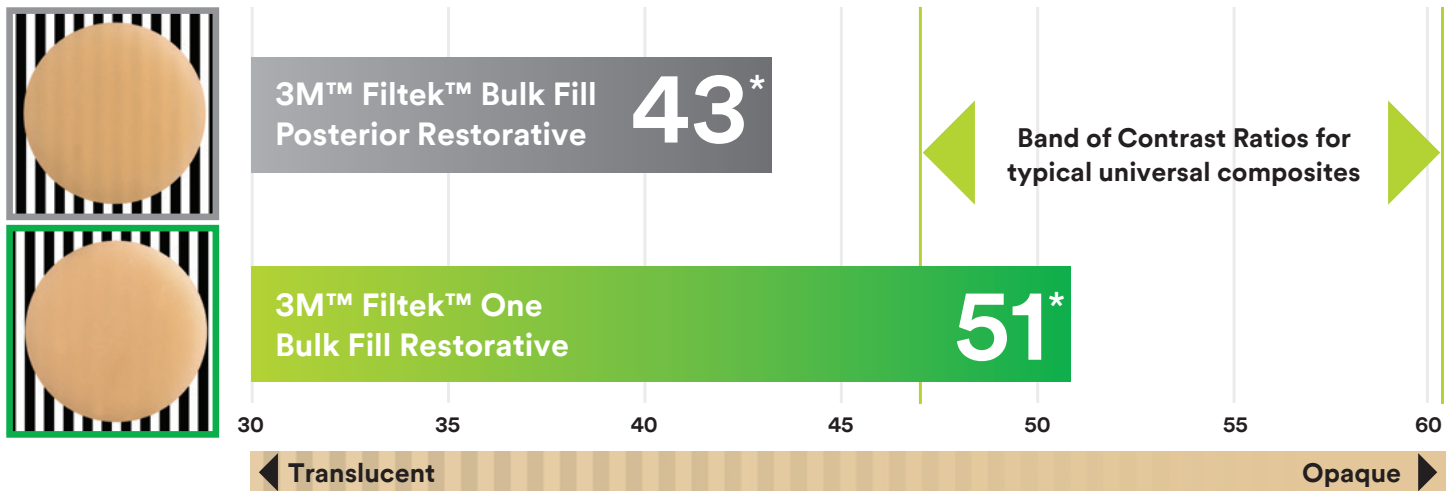
Further development of 3M nanotechnology allows us to manage opacity and depth of cure in a smarter way. With our unique Smart Contrast Ratio Management technology, we've increased opacity without reducing depth of cure.

In its cured state, 3M™ Filtek™ One Bulk Fill Restorative has a higher opacity than 3M™ Filtek™ Bulk Fill Posterior Restorative, resulting in improved esthetics.

Did you know?

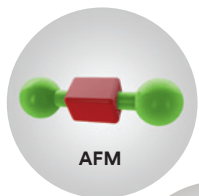
Contrast Ratio is the measurement of the translucency or opacity of the material.

Contrast Ratio

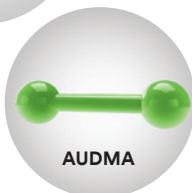


Innovative AUDMA and AFM monomers

Reduces shrinkage and relieves stress to allow bulk fill placement up to 5 mm.



Addition-fragmentation monomer (AFM) relieves stress during polymerization.

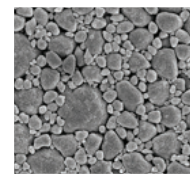


Aromatic urethane dimethacrylate (AUDMA) helps reduce the amount of shrinkage and stress that occurs during polymerization.

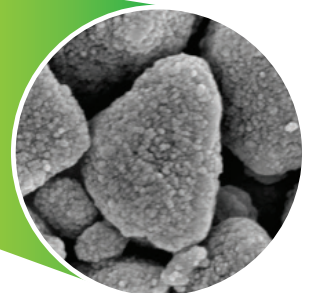
3M's TRUE nanofiller technology

Provides superior wear resistance and excellent polish retention.

5K magnification of nanocluster



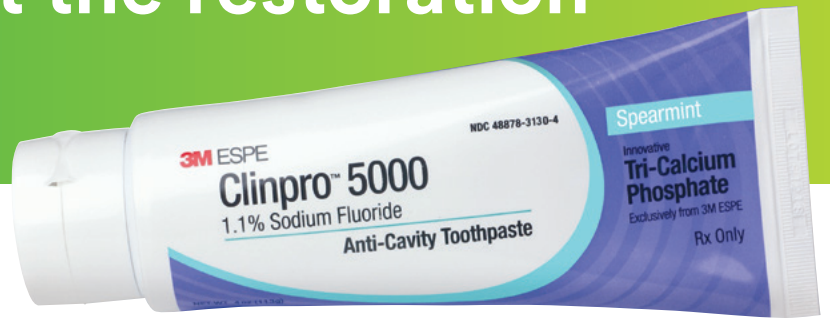
50K magnification of nanocluster



Now that you've repaired the tooth, help them protect the restoration at home.

3M™ Clinpro™ 5000 1.1% Sodium Fluoride Anti-Cavity Toothpaste

Patients who are at a moderate to high risk for caries are in need of preventive treatment—however, patient compliance can be a concern. When you prescribe 3M™ Clinpro™ 5000 1.1% Sodium Fluoride Anti-Cavity Toothpaste with TCP from 3M, you are providing a prescription-strength formulation that's easy for anyone to use. It delivers more fluoride than over-the-counter toothpastes to help strengthen and repair enamel—and is backed by over five years of clinical usage. Plus, it's as easy to apply as brushing your teeth.



Contains 1.1% NaF (5000 ppm)

- ✓ Protects against cavities and helps reverse white spots
- ✓ Proven through 5 years of clinical usage
- ✓ Low abrasion
- ✓ One-step convenience improves patient compliance—patients simply switch to Clinpro 5000 toothpaste for their brushing regimen

Prescription only. Use in adults and children 6 years of age and older. Use once daily in place of conventional toothpaste. Go to www.3M.com/dental to obtain the full prescribing information or call 1-800-634-2249. You are encouraged to report negative side effects of prescription drugs to the FDA. Visit www.fda.gov/medwatch, or call 1-800-FDA-1088.

Ordering Information



3M™ Filtek™ One Bulk Fill Restorative

Refill	Item #	Item #	
		Shade	Syringe
A1	4866A1		4867A1
A2	4866A2		4867A2
A3	4866A3		4867A3
B1	4866B1		4867B1
C2	4866C2		4867C2

SYRINGE SHADE REFILLS include: 1 – 4g syringe; Technique Guide; Instructions for Use.

CAPSULE SHADE REFILLS include: 20 – 0.2g capsules; Technique Guide; Instructions for Use.



Item #	Product Description
12115	Clinpro™ 5000 1.1% Sodium Fluoride Anti-Cavity Toothpaste Vanilla Mint Flavor – 4oz tube
12115BG	Clinpro™ 5000 1.1% Sodium Fluoride Anti-Cavity Toothpaste Bubble Gum Flavor – 4oz tube
12115SM	Clinpro™ 5000 1.1% Sodium Fluoride Anti-Cavity Toothpaste Spearmint Flavor – 4oz tube



www.3M.com/FiltekOne

3M Oral Care
2510 Conway Avenue
St. Paul, MN 55144-1000 USA
Phone 1-800-634-2249
Web 3M.com/dental

3M Canada
Post Office Box 5757
London, Ontario N6A 4T1
Canada
Phone 1-888-363-3685

3M, ESPE, Clinpro and Filtek are trademarks of 3M or 3M Deutschland GmbH. Used under license in Canada. Printed in USA. © 3M 2016. All rights reserved. 70-2013-0803-1