

# Hand Sanitizer

- Kills more than 99.99% of germs that may cause illness
- America's #1 brand of hand sanitizer<sup>1</sup>
- Outperforms other brands ounce for ounce<sup>2</sup>
- Gentle on skin, even with high-frequency use



- White Product Color
- Graphite Product Color

Push-Style    Touch-Free (4 C Batteries)    Touch-Free (Energy-on-the-Refill)    Push-Style



**ES4** 1200 mL    **ES6** 1200 mL    **ES10** 1200 mL    **CS2** 1000 mL

## PURELL® Hand Sanitizer

### Dispensers

Multiple styles for optimal convenience

<input type="radio"/> 5020-01	<input type="radio"/> 6420-01	<input type="radio"/> 8320-E1	<input type="radio"/> 4121-06
<input checked="" type="radio"/> 5024-01	<input checked="" type="radio"/> 6424-01	<input checked="" type="radio"/> 8324-E1	

### Refills

PURELL® Advanced Hand Sanitizer Foam	5053-02	6453-02	8353-02	—
PURELL® Advanced Hand Sanitizer Gel	5063-02	6463-02	—	—
PURELL® Advanced Hand Sanitizer Green-Certified Gel	—	—	—	4163-08
PURELL® Advanced Hand Sanitizer ULTRA NOURISHING™ Foam	5057-02	—	8357-02	—

## PURELL Hand Sanitizer Bottles



**515 mL** Foam Pump Bottle    **12 oz.** Gel Bottle

Kills more than 99.99% of most common germs that may cause illness

	5010-04	3659-12
--	---------	---------

## Personals

Portable, single-use hand sanitizer

	9630-15-18CT	9630-12-125CT-NS
--	--------------	------------------



**18 ct.** (Non-Sterile)    **125 ct.** (Non-Sterile)

# Hand Soap

- Mild and effective
- Helps maintain skin health and is formulated for frequent use
- Free of triclosan and phthalates



Push-Style    Touch-Free (4 C Batteries)    Touch-Free (Energy-on-the-Refill)    Push-Style



**ES4** 1200 mL    **ES6** 1200 mL    **ES10** 1200 mL    **CS2** 1000 mL

## PURELL® Hand Soap

### Dispensers

Multiple styles for optimal convenience

<input type="radio"/> 5030-01	<input type="radio"/> 6430-01	<input type="radio"/> 8330-E1	<input type="radio"/> 4131-06
<input checked="" type="radio"/> 5034-01	<input checked="" type="radio"/> 6434-01	<input checked="" type="radio"/> 8334-E1	

### Refills

PURELL CRT HEALTHY SOAP™ High-Performance Foam	5085-02	—	8371-02	—
PURELL HEALTHY SOAP™ Gentle & Free Foam	5072-02	6472-02	—	—
PURELL® Antimicrobial Foaming Hand Soap	—	—	8382-02	—
PURELL® Hand Soap Premium Lotion Handwash	—	—	—	4171-08
PURELL® Hand Soap Antibacterial Lotion Soap with PCMX	—	—	—	4173-08

## PURELL HEALTHY SOAP Bottles

PURELL® Healthcare CRT HEALTHY SOAP® High-Performance Foam	5014-04
PURELL HEALTHY SOAP™ Gentle & Free Foam	5016-04



**515 mL** Foam Pump Bottle

# Additional Solutions

- Multi-surface disinfectant spray and wipes
- Hand sanitizer stands for patient waiting rooms



## PURELL® Surface

### Spray

PURELL® Healthcare Surface Disinfectant Broad-spectrum, one-step surface disinfectant	32 oz. 3340-06	Pour Gallon 4340-04	Gallon Sprayer —
PURELL® Surface Sanitizer and Disinfectant Battery-Powered Sprayer	—	—	5350-12

### Wipes

PURELL® Healthcare Surface Disinfecting Wipes Versatile and ready to use on most hard surfaces; offers broad-spectrum efficacy.	72 ct 9370-12	110 ct 9340-06	Wall bracket 9016-01	Stand 9116-01
PURELL® Healthcare Flowpacks Carrying Caddy	9332-01	—	—	—

## PURELL® Hand Sanitizer

### Desktop Docks

PURELL PLACES™ 12 oz. bottle docking station Promotes hand hygiene and creates a unique usage experience.	Bottle Dock with Light	Bottle Dock (no light)
	<input type="radio"/> 9618-12-WHT	<input type="radio"/> 9619-12-WHT
	<input checked="" type="radio"/> 9618-12-GPH	<input checked="" type="radio"/> 9619-12-GPH

### Stands

Elegant floor stand reinforces high standards.	<input type="radio"/> 8210-DS
	<input checked="" type="radio"/> 8214-DS

<sup>1</sup> IRI Total U.S. - Multi Outlet, For 52 Week Period Ending 7/31/22, Retail Dollar Sales, Total Hand Sanitizer Liquids; Online survey of 1,000 US adults, October 2021, MR#006-10.

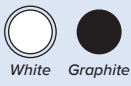
<sup>2</sup> Choice for ounce kills more germs than other national brands when used on hands in accordance with FDA Health Care Personnel Handwash Test methodology.

## Choosing the Right Dispenser for Your Practice

**Push-Style**




ES4 in White

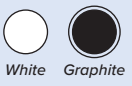


White Graphite

**Touch-Free**



ES10 in Graphite

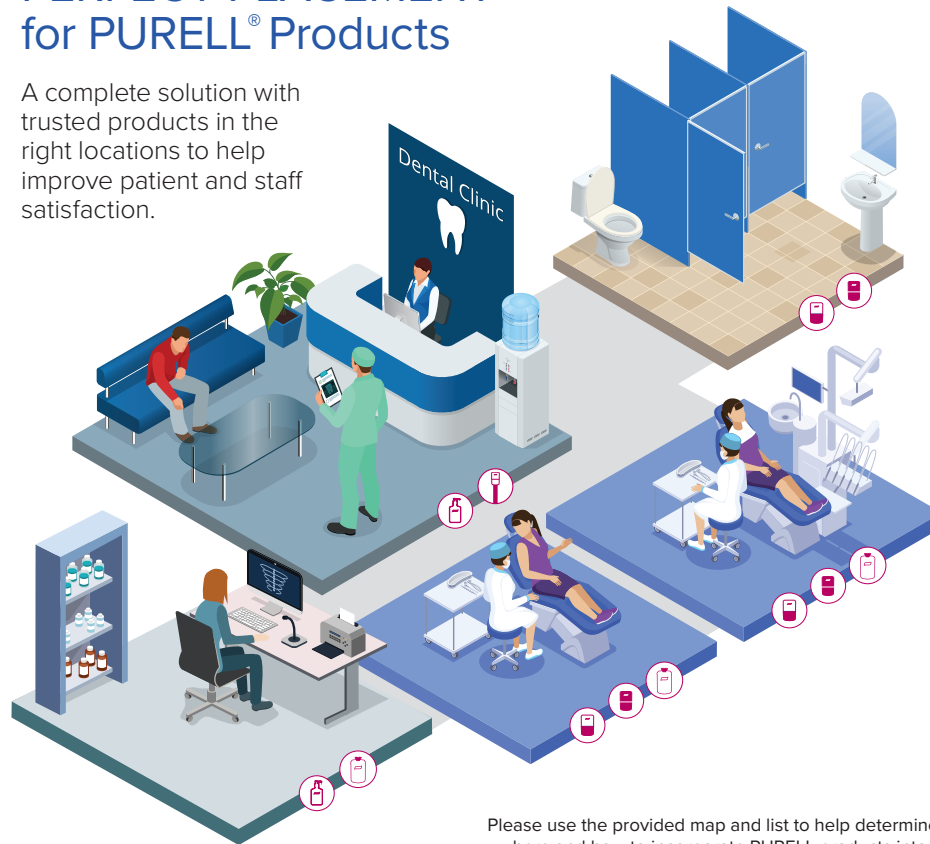


White Graphite

- Multiple mounting options for ultimate adaptability.
- Easy-to-install refills snap in quickly for easy maintenance.
- No-charge dispensers; talk to your distributor rep to learn about the program.

## PERFECT PLACEMENT™ for PURELL® Products

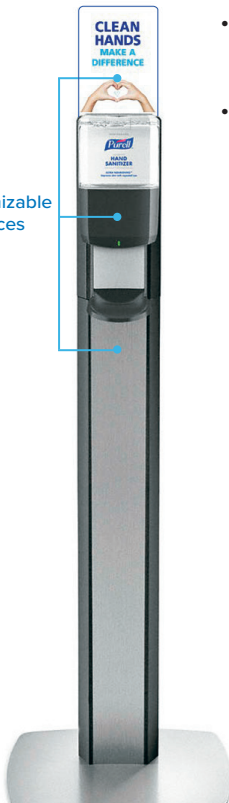
A complete solution with trusted products in the right locations to help improve patient and staff satisfaction.




Please use the provided map and list to help determine where and how to incorporate PURELL products into your practice. Use tally marks to identify number of products needed for your practice.

## Consider a Floor Stand for Your Waiting Room and High-Traffic Areas

- The dispenser stand boasts a sleek design to seamlessly fit into your office, waiting room, or lobby.
- From logos on dispensers, custom header signs, or a complete personalization of the PURELL MESSENGER™ Floor Stand, you can showcase your commitment to cleanliness, health, and well-being.



Customizable Spaces



Header signs can be personalized with various sizes and styles.

Customize your dispenser with your logo.

See your logo on a dispenser:  
<http://gojo.com/en/Dispenser-Customization>



<b>Hand Sanitizer</b> One recommended per room.	Quantity:
<b>Sanitizer Dispensers:</b> Operatories	
<b>Sanitizer Bottles:</b> Desks & Countertops	
<b>Sanitizer Stands:</b> Waiting Rooms & Elevators	
<b>Hand Soap</b> One recommended per sink.	Quantity:
<b>Soap Dispensers:</b> Operatories & Restrooms	
<b>Soap Bottles:</b> Breakroom & Smaller Sink Areas	
<b>Surface Disinfectant</b> One recommended per room.	Quantity:
<b>Surface Disinfectant Spray:</b> Waiting Room	
<b>Surface Disinfectant Wipes:</b> Operatories, Breakrooms & Work Stations	



Scan here to learn more about our trusted solutions.

Questions? Contact: [dental@gojo.com](mailto:dental@gojo.com)



GOJO, MAKERS OF PURELL™



Get the Peace of Mind That Patients and Staff Appreciate



Make PURELL® Products Part of Your Dental Practice

