



Tissue Management

Rapid hemostasis, made clear

Materials and Methods

AVAILABLE FOR TISSUE MANAGEMENT

Hemostasis occurs when a solution or device is applied to a bleeding site, the composition manifests a hemostatic effect by exerting a vasoconstriction and astringent affect (i.e. blood coagulation activity) on superficial capillary vessels.



Ferric Sulfate
Liquids

The "Original" solution

Ferric Sulfate
Gels

The "Gold Standard"
solution

Clear Hemostatic
Gels

The "Ideal" solution

Soft Tissue
Diode Lasers

The "Advanced"
solution

Poor Tissue Management can result in:



RESTORATION FAILURE

Presence of sulcular fluid can inhibit quality adhesion, and lead to leakage.



IMPRESSION REMAKES

When impressions are made in the presence of sulcular fluid, the quality of impression suffers.



STAINING

Certain hemostatic agents can result in staining of soft tissue, & staining underneath the restoration.



LOST TIME

All of the points above reduce efficiency and can result in unsatisfied patients.



Ferric Sulfate

Hemostatic Solutions

Iron Based Products

Known for rapid onset hemostasis

Can result in staining

Not ideal for aesthetic regions

Not ideal for use with self-etch (no-rinse) adhesives



Clear

Hemostatic Solutions

Aluminum Based Products

Known to provide less rapid onset hemostasis

Eliminate risk of staining

Ideal for aesthetic regions

Ideal for use with self-etch (no-rinse) adhesives

INTRODUCING

Quick-Stat™
FREE

The first clear hemostatic agent
with shortened hemostasis time.

HEMOSTASIS, MADE CLEAR

The results of a clinical study showed that Quick-Stat FREE significantly reduces the amount of time needed to manifest hemostatic effects.

Various solutions were used in a variety of clinical applications and conditions.

Quick-Stat FREE outperformed other leading brands in all cases.

RAPID ONSET

20%

Shorter hemostasis time
compared to other leading
clear hemostatic agents.

What's the Difference?



Patented

Astringent Hybrid Technology

Engineered with Aluminum and Magnesium Chloride.

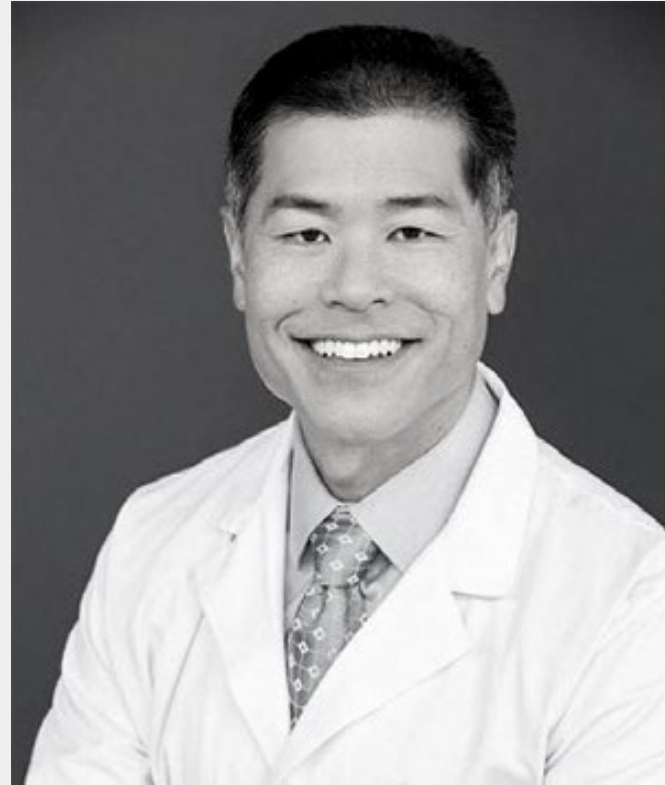
Powerful Surfactant

Allows better penetration to more effectively plug cut capillaries.

Resulting in:

- 20% faster onset
- An ideal gel consistency
- More predictable adhesion
- Quality Impressions
- No staining

August 12th, 2020 Webinar watch on YouTube...link below



- Dr. Michael Miyasaki, D.D.S.

KOL Engagement

What do you do when
the tissue keeps turning your work bloody red?
This is a common challenge we face every day from bonding in blood to
impressioning in blood.

All difficult tasks that ultimately lead to restorative failure, an unhappy
patient and clinician.

This presentation is going to explore the ways to prevent and handle
this problem, and show you why, perhaps, not all products are the same
although they may appear to be.

Learning Objectives:

1. Know how to assess your work site before you begin.
2. Understand preparation designs to avoid tissue damage
3. Understand the nuances of the many ways of tissue management from solutions to lasers

<https://www.youtube.com/watch?v=TERN5dRyHAU&t=7s>



Contact us:

Checkout our full suite of Tissue Management products @

vistaapex.com
877.418.4782