

**3M** Science.  
Applied to Life.™



RelyX™ Luting Plus Resin Modified Glass Ionomer Cement

# Everyday easy.

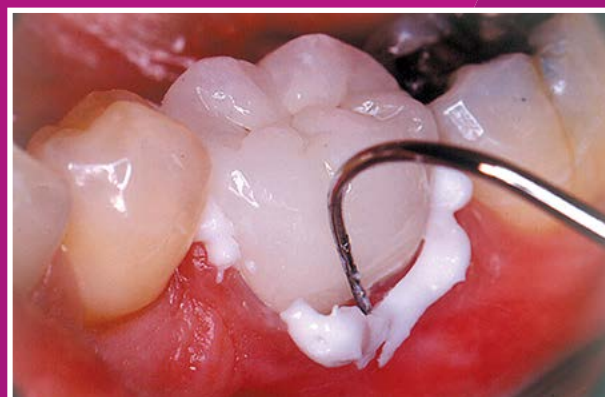


**Recommended for:**  
Metal and porcelain fused to metal  
(PFM) Pediatric crowns, orthodontic  
bands, implants

## Automix delivery eliminates hand-mixing

Convenient, versatile and easy-to use 3M™ RelyX™ Luting Plus Cement eliminates hand-mixing while offering better bond strength than conventional glass ionomer luting cements. This formula is suitable for a wide range of everyday applications, including PFMs, metal and pediatric crowns and zirconia restorations.

- 5-second tack light cure feature for “cleanup on demand”
- Easy to use automix delivery
- Sustained fluoride release for caries-prone patients
- A good choice for pediatric restorations
- Higher bond strength than conventional glass ionomer
- Virtually no post-op sensitivity



RelyX Luting Plus is a resin-modified glass ionomer cement with a tack light cure option, for faster clean-up.

## Get more convenience – without sacrificing strength.

RelyX Luting Plus cement is formulated to help make everyday procedures like PFMs and metal/pediatric crowns faster and more reliable.

Featuring an improved paste/paste formula with tack light cure option, RelyX Luting Plus offers better bond strength compared to other leading RMGI cements, while making clean-up fast and easy. Also available in the Clicker™ Dispenser.

### Recommended Applications ( ++ Highly recommended / + Recommended)

| Indication              | Metal/<br>Metal Based | Glass<br>Ceramics<br>(including Li.<br>Disilicate)<br>(e.g. e.max®,<br>VITA Mark II,<br>IPS Empress 2) | Oxide<br>Ceramics<br>(e.g.<br>Lava™ Plus,<br>Brux Zir®,<br>Procera®) | Resin Nano<br>Ceramics<br>(e.g. Lava™<br>Ultimate<br>CAD/CAM<br>Restorative) | Resin<br>Composites |
|-------------------------|-----------------------|--|--|--|---------------------|
| Inlays/<br>Onlays       | +                     |  | +  |  |                     |
| Crowns/<br>Bridges      | ++                    |  | +  |  |                     |
| Endodontic<br>Posts     | ++                    |  | +  |  |                     |
| Maryland<br>Bridges     |                       |  |  |  |                     |
| On Implant<br>Abutments | ++                    |  | ++   |  |                     |



**RelyX™ Luting Plus Automix  
— Trial Kit (3535TK)**



**RelyX™ Luting Plus Clicker™ Dispenser  
— Trial Kit (3525TK)**

### Ordering Information

| Item No. | Product   | Contents  |
|----------|---|---|
| 3535TK   | RelyX™ Luting Plus Automix Resin Modified Glass Ionomer Cement Trial Kit    | (1) 8.5g automix syringe<br>(12) – mixing tips<br>technique guide<br>instructions for use |
| 3535     | RelyX™ Luting Plus Automix Resin Modified Glass Ionomer Cement Value Pack   | (3) 8.5g automix syringe<br>(36) – mixing tips<br>technique guide<br>instructions for use |
| 3540     | RelyX™ Luting Plus Automix Resin Modified Glass Ionomer Cement Automix Tips | (12) mixing tips  |
| 3525TK   | RelyX™ Luting Plus Cement Trial Kit Clicker™ Dispenser                      | (1) 11g Clicker™ Dispenser<br>Technique Guide<br>Instructions for Use                     |
| 3525     | RelyX™ Luting Plus Cement Refills Clicker™ Dispenser                        | (2) 11g Clicker™ Dispensers<br>Instructions for Use                                       |



**3M Oral Care**  
2510 Conway Avenue  
St. Paul, MN 55144-1000 USA

Phone 1-800-634-2249  
Web 3m.com/dentalcements

**3M Canada**  
Post Office Box 5757  
London, Ontario N6A 4T1  
Canada

Phone 1-888-363-3685

3M, “3M Science. Applied to Life.”, Clicker and RelyX are trademarks of 3M Company or 3M Deutschland GmbH. Used under license in Canada. All other trademarks are owned by their respective owners.

Please recycle. © 3M 2018.  
All rights reserved. 70-2013-0488-1 HB14373 REV 7/2018