

Products designed for the way you like to work ...

For every clinical situation, you'll find an Impregum™ Soft Polyether Impression Material to suit your technique and procedure. Choose from a wide range of viscosities and set/working times. Tray material now available in both Penta™ AND handgun delivery.

More proven solutions brought to you by 3M ESPE, the worldwide leader in impression materials.



Choice of two deliveries: Pentamix™ 3 Automatic Mixing Unit dispenses completely homogeneous mix at the push of a button. Or convenient handgun dispensing.

Ordering Information

Item #	Product Information
P31739	Impregum™ Penta™ Soft Heavy Body/Light Body Introductory Kit Kit Includes: 1 – 300ml base paste HB; 1 – 60ml catalyst HB; 1 – Penta cartridge HB; 10 – Penta mixing tips, red; 2 – 50ml cartridges LB; 5 – polyether mixing tips, white; 5 – polyether intraoral tips, white; 5 – intra-oral syringes, purple; 1 – 17ml polyether tray adhesive
P31779	Impregum™ Penta™ Soft Quick Step Heavy Body/Light Body Introductory Kit Kit Includes: 1 – 300ml base paste HB; 1 – 60ml catalyst HB; 1 – Penta cartridge HB; 10 – Penta mixing tips, red; 5 – polyether mixing tips, white; 5 – polyether intraoral tips, white; 5 – intra-oral syringes, purple; 1 – 17ml polyether tray adhesive; 2 – 50ml cartridges LB
P31735	Impregum™ Penta™ Soft Medium Body Introductory Kit Kit Includes: 1 – 300ml base paste MB; 1 – 60ml catalyst MB; 1 – Penta cartridge MB; 1 – Penta elastomer syringe; 10 – Penta mixing tips, red; 1 – 17ml polyether tray adhesive
P31771	Impregum™ Penta™ Soft Quick Step Medium Body Introductory Kit Kit Includes: 1 – 300ml base paste MB; 1 – 60ml catalyst MB; 1 – Penta cartridge MB; 1 – Penta elastomer syringe; 10 – Penta mixing tips, red; 1 – 17ml polyether tray adhesive
31786	Impregum™ Soft Tray Material Introductory Kit Kit includes: 3 – 50ml tray cartridges; 1 – 50ml cartridge LB; 10 – polyether tray mixing tips, purple; 5 – polyether mixing tips, white; 5 – polyether intraoral tips, white; 5 – intra-oral syringes, purple; 1 – 17ml polyether tray adhesive
31789	Impregum™ Soft Quick Step Tray Introductory Kit Kit includes: 3 – 50ml tray cartridges; 1 – 50ml cartridge LB; 10 – polyether tray mixing tips, purple; 5 – polyether mixing tips, white; 5 – polyether intraoral tips, white; 5 – intra-oral syringes, purple; 1 – 17ml polyether tray adhesive
31741	Impregum™ Penta™ Soft Heavy Body Refill Pack 2 – 300ml base paste; 2 – 60ml catalyst
31769	Impregum™ Penta™ Soft Quick Step Heavy Body Refill Pack 2 – 300ml base paste; 2 – 60ml catalyst
31731	Impregum™ Penta™ Soft Medium Body Refill Pack 2 – 300ml base paste; 2 – 60ml catalyst

Item #	Product Information
31765	Impregum™ Penta™ Soft Quick Step Medium Body Refill Pack 2 – 300ml base paste; 2 – 60ml catalyst
31746	Impregum™ Penta™ Soft Light Body Refill Pack 1 – 300ml base paste; 1 – 60ml catalyst
31785	Impregum™ Soft Tray Material Refill Pack 4 – 50ml cartridges; 10 – polyether tray mixing tips, purple
31785J	Impregum™ Soft Tray Material Jumbo Refill Pack 30 – 50ml cartridges
31788	Impregum™ Soft Quick Step Tray Material Refill Pack 4 – 50ml cartridges; 10 – polyether tray mixing tips, purple
31788J	Impregum™ Soft Quick Step Tray Material Jumbo Refill Pack 30 – 50ml cartridges
31752	Impregum™ Soft Light Body Refill Pack 4 – 50ml cartridges; 20 – polyether mixing tips, white
31767	Impregum™ Soft Quick Step Light Body Refill Pack 4 – 50ml cartridges; 20 – polyether mixing tips, white
P3794	Impregum™ Penta™ Cartridge, Soft Heavy Body
P31774	Impregum™ Penta™ Cartridge, Soft Quick Step Heavy Body
P3788	Impregum™ Penta™ Cartridge, Soft Medium Body
P31776	Impregum™ Penta™ Cartridge, Soft Quick Step Medium Body
P3796	Impregum™ Penta™ Cartridge, Soft Light Body
71470	20 Impregum™ Intra-oral Syringes
77580	1 Cartridge Dispenser 1:1/2:1
71512	50 Penta™ Mixing Tips, Red
71451	50 Polyether Mixing Tips, White
71454	50 Polyether Tray Mixing Tips, Purple
71461	50 Polyether Intraoral Tips, White
30600	1 – 17ml Polyether Tray Adhesive

Impregum™

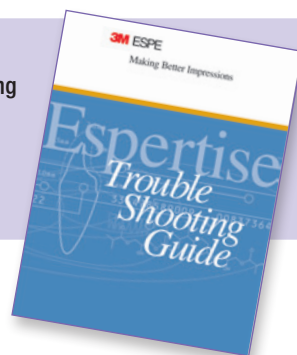
Soft Polyether Impression Material



Get accurate detail
even in moist conditions

Make Better Impressions

Even the most experienced practitioner, using the best materials, can encounter difficulties when making an impression. 3M ESPE has taken its long history in developing and testing impression materials, and assembled the **Making Better Impressions Troubleshooting Guide**. It identifies common impression problems and offers solutions. To get your **FREE copy**, download it now from our website – or call Customer Care at 1-800-634-2249, ext. 1.



DENTAL LABS: Call for your FREE copy of Lab Handling Guidelines for Polyether Impressions.
Customer Care Center: 1-800-634-2249 www.3MESPE.com/GreatImpressions

3M ESPE

Dental Products

3M Center
Building 275-2SE-03
St. Paul, MN 55144-1000
U.S.A.
1-800-634-2249

3M Canada

Post Office Box 5757
London, Ontario N6A 4T1
Canada
1-888-363-3685

Please recycle. Printed in U.S.A.
© 3M 2011. All rights reserved.
70-2009-3882-0

3M, ESPE, Espertise, Impregum, Penta and Pentamix are trademarks of 3M or 3M ESPE AG. Used under license in Canada. Aquasil and Exafast are not trademarks of 3M.

3M ESPE

Accurate

This material makes it easier to capture accurate impressions the first time, reducing retakes and adjustments.

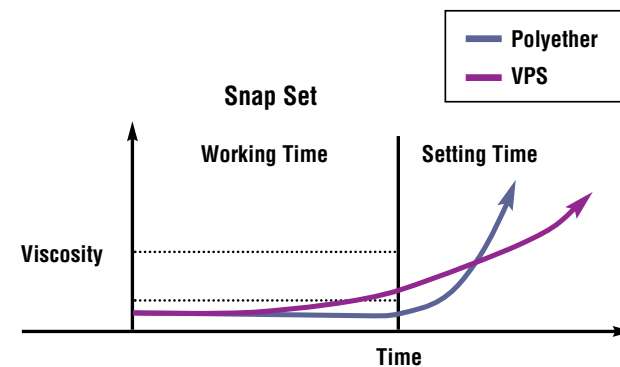
Many doctors use both polyether and VPS impression materials. But when the situation calls for capturing fine detail – even in a wet environment – then Impregum™ Soft Polyether Impression Material is the one to reach for. Its characteristic profile helps you capture accurate detail the first time – which can lead to fewer retakes, remakes and adjustments for you, and a more comfortable restoration for your patients.

The less-rigid, *SOFT* polyether gives you the same great results, but is easier to remove. And, the NEW mint flavor is more pleasing to your patients.



An ultimately forgiving “snap-set behavior” means less stress for dentists and dental assistants.

Impregum Soft material is *ultimately forgiving*. Snap-set behavior – which is typical for polyether – means the material will not start setting before the working time ends. When it does set, it does so immediately. You can have greater assurance of achieving precise-fitting restorations without distortion, across a wide variety of techniques.



Summary of advantages

- Better initial hydrophilicity than any VPS – provides void-free impressions in moist conditions
- Excellent flow properties – captures fine details for precise impressions
- “Snap-set behavior” of soft polyether is ultra-forgiving
- Less-rigid, *soft* polyether is easier to remove – great for dual-arch trays
- Quick-Step material cuts working and setting times by at least 33% over Impregum™ Soft Polyether Impression Material

Outstanding initial hydrophilicity allows excellent detail reproduction in a wet environment.

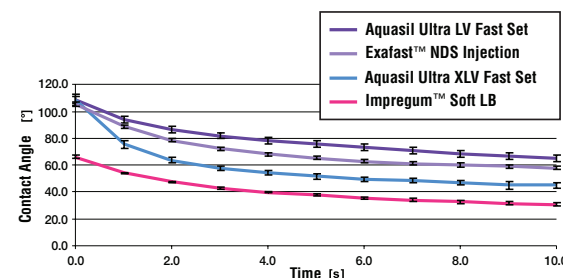
Polyether is hydrophilic by nature of its chemical makeup. From the time it is mixed, until it sets, *moisture in the mouth should not interfere with achieving accurate, void-free impressions!*

- Outstanding initial hydrophilicity displaces moisture right from the start of mix – when it counts – for void-free impressions!
- Preferred over VPS for excellent detail reproduction in a wet environment!¹
- Moisture and saliva will not compromise marginal accuracy or integrity.



Water drop on Aquasil Impression Material prior to set (left). Initially, Aquasil shows hydrophobic behavior. Water drop on Impregum™ Soft Polyether Impression Material prior to set (right).

Source: Mondon M., Ziegler Chr., Reusch B., “Surface Wettability During the Curing Process of Impression Materials,” AADR, #618, 2001.

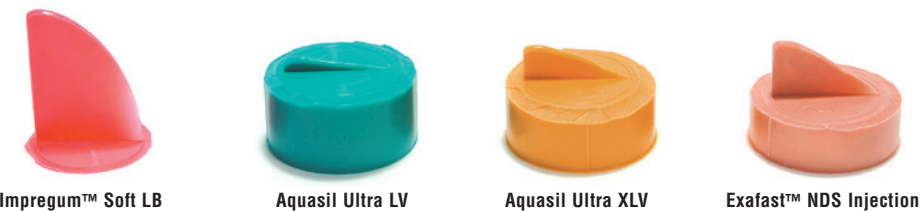


Contact angle measurement on unset material is a method used to determine hydrophilicity. These charted results show why Impregum™ Soft Polyether Impression Material is valuable to dentists for getting precise impressions the first time.

Source: Klettke T., Kuppermann B., Führer C., Richter B., “Hydrophilicity of Precision Impression Materials During Working Time,” CED/IADR, Istanbul, 2004, submitted for publication.

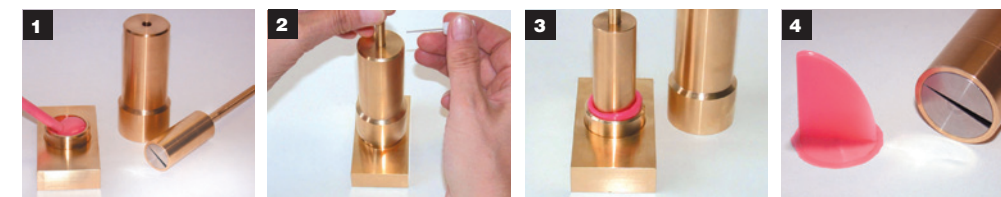
Impregum™ Soft Impression Material flows better into tough spots to capture fine detail.

The Shark Fin Test proves that Impregum Soft polyether material flows better into the toughest spots, yet does not slump – capturing more detail than *any* VPS! In fact, it offers the best flow behavior during the *entire* working time.



An established method for analyzing flow properties is the Shark Fin Test, developed by impression experts at 3M ESPE. Results shown are at the end of the manufacturer’s recommended working time.²

Shark Fin Test Method



1. Approximately 10ml of impression material is injected to fill the receptacle of the Shark Fin device. The mixing tip is buried into the receptacle to avoid trapping air.

2. A fixed mold and 147g weight are placed over the receptacle. The pin is released, allowing the weight to sink slowly into the material. (The 147g weight accurately reflects the pressure applied during clinical placement in the mouth.)

3. The material is allowed to set.

4. The molds are separated and samples are measured using a calliper accurate to 0.01mm. **The taller the fin height, the better the flow.**

Quick Step material cuts working and setting times by 33%, and helps “lock in” an accurate impression on the first try.

Dentists report Impregum™ Soft Quick Step Polyether Impression Material has enabled them to capture detailed impressions on the first try, and produce restorations that require fewer adjustments. Plus, in their opinions, finished cases look better, and are less stressful to produce.

- Offers maximum working time of 1 minute, and a setting time in the mouth of 3 minutes.
- Ideal for 1-2 unit cases.



Impregum Soft Polyether Impression Material indications

- Crowns and bridges
- Inlays and onlays
- Functional impressions
- Implant abutments
- Quick-setting materials especially suited for single-unit and two-unit impressions

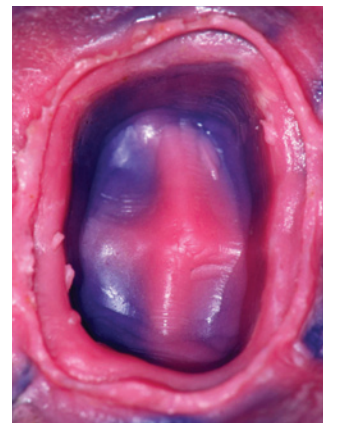


Photo courtesy of Jorge Perdigao, DMD, and Holmer Meiser, DDS, University of Minnesota.

“The hydrophilic properties ensure that my impressions have outstanding marginal accuracy and integrity, despite the presence of moisture and saliva.”

Dr. David DeGrave
Green Bay, WI

¹ Source: 3M ESPE internal data. For test procedure details, call 3M ESPE at 800-634-2249.

² Photo documentation by 3M ESPE. Data on file.